

CURRICULUM VITAE

Roodzand, Jan



Utility experience

Name: Roodzand, Jan (57)

Nationality: Dutch

Profession: Managing consultant

Country of Birth: The Netherlands

Key Qualifications:

Jan is an experienced managing consultant driven by commitment and enthusiasm. He likes to cooperate in developing and implementing innovative initiatives where information supports the collaboration within organisations. In addition, Jan has extensive experience in applying geo-technology as an integral part of a total solution. Based on his excellent analytical skills, Jan knows how to separate the main from the side issues. He is capable of reaching and persuading a wide audience (from top management to the operational staff) both in speech and in writing.

From a technical (civil engineering) background, he has built a broad experience in the public domain, from local and central government organisations up to (and predominantly) managers of complex infrastructures in Utility and Transportation both in the Netherlands and internationally.

Jan Roodzand is the founding director at Roodzand Advice. In his role as manager and managing consultant, he has extensive experience in advising customers to create visions for the use of geospatial information throughout the enterprise. As (project) manager he managed several large and medium large projects in the Utility segment and for Governmental organisations. Most recently, he was the project manager for the GIS-implementation at *TenneT*, where he successfully delivered the GIS back-office specifications, the definitions for the analysis environment and the corporate wide intranet viewer. He has concluded this multi-million project within time and within budget.

Jan has far-reaching experiences with the main GIS solutions, e.g. ESRI, Intergraph, Autodesk as well as Open-Source, solutions. He was involved in GIS integration projects with ERP, CRM, SCADA, Databases and document management systems.

This curriculum vitae outlines his general experience with an emphasis on the Utility market segment.

Education:

1977: MSc Civil Engineering

Various ICT and management focused courses

Languages:

	<u>Speaking</u>	<u>Reading</u>	<u>Writing</u>
Dutch	Native	Native	Native
English	Good	Good	Good
German	Fair	Good	Basic
Afrikaans	Fair	Good	Basic

Utility experience

Experience Record:**At / via Roodzand Advice, (managing director)**

2012-current
The Netherlands



Asset Data Quality Services

Net4s Founding Partner

- Manager new organisation, focused on supporting organisations in the Asset Management of complex infrastructures with *Asset Data Quality Services*
- Business development Net4s
- Program management Net4s activities
- Senior Management Consultant on asset data & asset information systems related topics

2011-current
The Netherlands

**Ruimteschepper Founding Partner**

- Manager new organisation, bundling self-employed GEO specialists in the Netherlands
- Business development Ruimteschepper

2012-current
Germany

**Tennet Transmission Operator overall program management**

TenneT TSO GmbH in Germany requested Jan to advise them in the implementing of their corporate wide Geo information system. Following the initial advice, Jan was asked to project manage the implementation of their project, which has a similar size to the earlier implementation at TenneT NL (see below). Program end is planned in summer 2015

2013
The Netherlands

**Akzo Nobel Industrial Chemicals B.V. Strategic Advice**

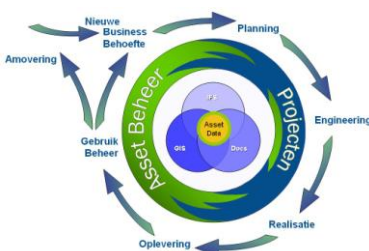
The Mining Technology Department requested Jan to advise them on the structuring of their asset related technical information for the salt mining activities. Based on a thorough scan of the existing data, interviews with the key-players a road-map for the optimizing of the data registration and usage is produced. This will be incorporated in 2014.

2008-2011
The Netherlands

**Tennet Transmission Operator overall program management**

At TenneT, Jan supported the organisation with the implementation of their GIS platform. The support started from scratch, and was finalised late 2011 with the final and complete implementation. Total projects value >€ 5 Mio, completed within budget and within time.

2008

**TenneT Transmission Operator: Strategic Advice**

- Strategic advice on usage of GIS systems in both projects for new constructions and in the maintenance phase; Advice was based on interviews and workshops with key-members of both management and operations, and consisted of:
 - inventory of current situation;
 - support for growth need/ambition TenneT;
 - requirements from the compliance with legislations.

Utility experience

2008-2009

TenneT Transmission Operator: **Implementation preparation**

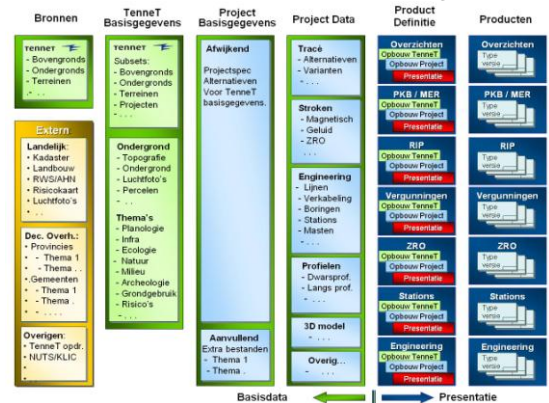
- Programme preparations for major GIS project:
 - Detailed Business Case
 - ICT Architecture in compliance with overall ICT-architecture
 - Organisational aspects (required skills and functions)
 - Platform selection (incl. European tender)
 - Project Initiation Document, budgeting

2008-2009

Tennet Transmission Operator: Parallel project: **organize GIS-unit**

- Project manager GIS-unit for 4 major new projects covering a total of 400km new 380kV

High Voltage corridors;
Establish, recruit and structure new unit for hands-on GIS support for TenneT's major new asset-projects. As from 2010 the units (10 FTE's) is part of TenneT's Asset Planning organisation.



- TenneT uses ESRI's ARC-GIS for planning support

2009-2011

Tennet Transmission Operator: **Programme Manager GeoneT**



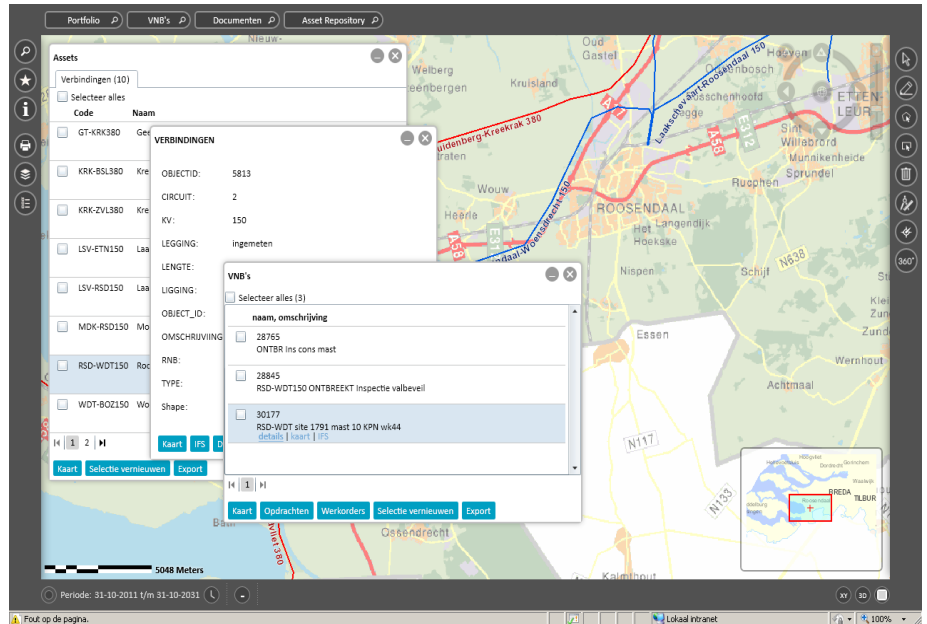
Programme Manager of enterprise asset management system including GIS. Program consisted of 16 projects resulting in the following system environments:

- GIS back-office for asset registration (Based on Bentley's sisNET platform as a result of a European tender). Project included implementing new system and migration existing data to this system
- Analysis environment, using Business objects and ESRI's ArcView for reporting and ad-hoc questions from management and external organisations;
- TenneT corporate intranet environment combining TenneT's asset information, with environmental information (from Dutch Governments and Cadastre), and also information from the ERP and DMS environments.

This viewer was developed and implemented in 8 project stages and is based on the ESRI ArcGIS server platform

Utility experience

Example TenneT
GeoneT intranet viewer:



2011
CE Electric
United Kingdom

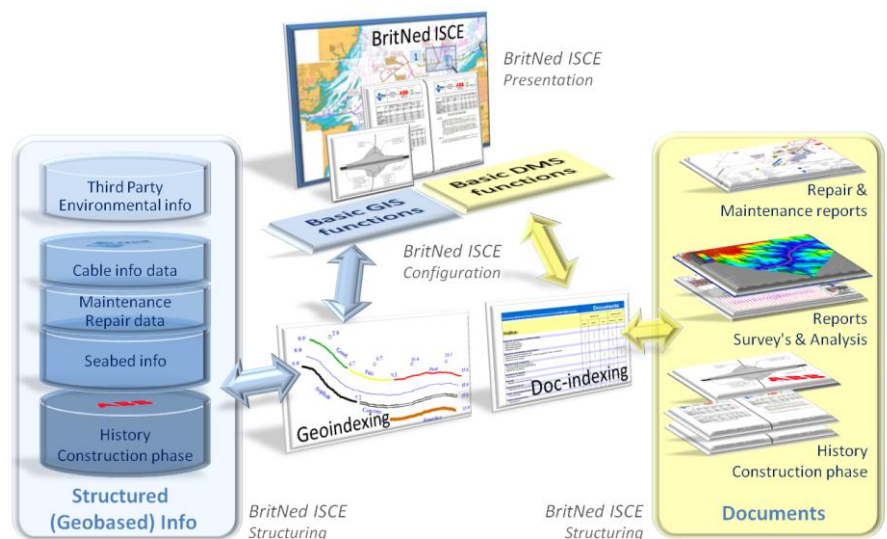

Bid manager in tender phase for (winning) provider of Utility asset management solution including Geographic Information system. (Rolta Europe)

2010-2011
United Kingdom/The
Netherlands



BritNed International Transmission Connector (National Grid-TenneT)
Managing consultant

- Strategic advice on usage of GIS systems in the Operations and maintenance phase;
- Programme Manager of implementing the enterprise asset management system including GIS
-



Utility experience

At Vicrea Solutions (founding partner)

2008 <u>The Netherlands</u>	Dutch Ministry of Transport, Public Works and Water Management Managing consultant <ul style="list-style-type: none"> • Second opinion on design and tender for mobile systems
2008 <u>The Netherlands</u>	Rendo Utilities Managing consultant Management advise for the new generation GIS systems, the migration of the current Bentley environment to a new Asset Management environment.
2006-2007 <u>Belgium</u>	WVEM Brugge (Utilities) Managing consultant <ul style="list-style-type: none"> • Define WVEM's organisation-wide strategic ICT document, focused on the next generation integrated AM/FM – GIS, Define WVEM overall data model that serves as integration platform. • Support tender for selection of new generation GIS • Project consultant for migration AM/FM system to Intergraph's G-Technology platform • Project Manager for migration Intranet viewer to Intergraph's GeoMedia Web Map • Management advice for the new generation GIS systems, the migration of the current environment to the new, with important attention for the Asset Management aspect and the broad presentation of information within the organisation.
2004-2005 <u>The Netherlands</u>	Essent (part of RWE) Managing consultant <ul style="list-style-type: none"> • Design GIS distribution management system • Integration with maintenance management system and ERP
2004 <u>The Netherlands</u>	Nuon (part of Vattenfald) Managing consultant <ul style="list-style-type: none"> • Second opinion on GIS program integrating 7 GIS systems
1999-2006 <u>The Netherlands</u>	Amsterdam Airport Schiphol Spatial system integrator <ul style="list-style-type: none"> • Design of new system for multi disciplinary Cable management • Advise in GIS-strategy focussing on consolidating the GIS activities • Support selection process standard GIS environment(s) • Define migration plan to new GIS environment
2004-2006 <u>The Netherlands</u>	DPO, Defence Pipeline Organisation Spatial system integrator <ul style="list-style-type: none"> • Define ICT-strategy document for Pipeline Management System (using Linear Reference System) • Define specifications, selection of ICT-tools and Management Consultant Implementation • Programme manager implementation Pipeline Management system
2002-2003 <u>The Netherlands</u>	ProRail Spatial system integrator <ul style="list-style-type: none"> • Define ICT-strategy for registration and maintenance of assets related databases

Utility experience

Marketing Manager, Intergraph Europe & Africa

As European Marketing Manager Responsible for Transportation solutions and the Civil Engineering design tools (InRoads and InRail)

- | | |
|----------------------------------|---|
| 1996-1997
<u>Germany</u> | Deutsche Bahn
Senior Advisor <ul style="list-style-type: none">Senior advisor implementation asset management system Deutsche Bahn |
| 1997-1998
<u>Romania</u> | Romanian Railways
Senior Advisor <ul style="list-style-type: none">Senior advisor preparation implementation GIS system Romanian Railways. |
| 1996-1998
<u>South Africa</u> | South African National Roads
Senior Advisor <ul style="list-style-type: none">Senior advisor and project manager first phase implementation Highway management System (LRS-based) South Africa |

Senior consultant and project manager, Bowhouse Data

- | | |
|---|---|
| 1988-1995
<u>The Netherlands</u> | Senior consultant and project manager on various project involving networks for transportation and Utility companies, among which NS (Dutch Rail), Amsterdam Airport Schiphol, Utility companies Essent, Nuon, and WVEM). |
| 1992-1995
<u>The Netherlands /
Spain / Belgium</u> | Project management projects in The Netherlands, Spain and Belgium |

Consultant, NS Dutch Rail

- | | |
|-------------------------------------|--|
| 1983-1988
<u>The Netherlands</u> | System analyst, consultant and manager programmers for CVI, Dutch Rails ICT department |
| 1984-1988
<u>The Netherlands</u> | Civil Engineer at Engineering department (currently Movaris) |

Consultant, DHV Consulting Engineers

- | | |
|--|--|
| 1979-1983
<u>The Netherlands</u> | Designer at Civil engineering department |
| 1981-1983
<u>Iraq / Burundi /
Tunisia</u> | Irrigation-projects in Iraq, Burundi and Tunisia |
-